

**OEM UHF Series
OEM RFID Module
Hardware Description**

iDTRONIC GmbH
Ludwig-Reichling-Straße 4
67059 Ludwigshafen
Germany/Deutschland

Phone: +49 621 6690094-0
Fax: +49 621 6690094-9
E-Mail: info@idtronic.de
Web: idtronic.de

Issue 0.1
– 21. July 2022 –

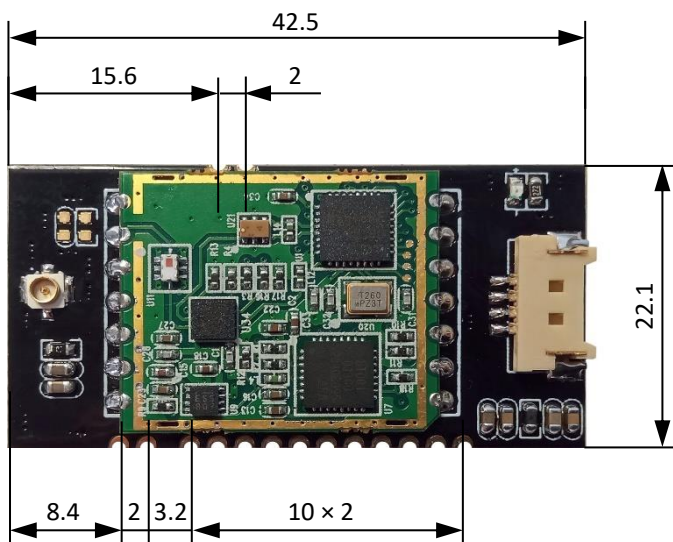
Subject to alteration without prior notice.
© Copyright iDTRONIC GmbH 2022
Printed in Germany

Contents

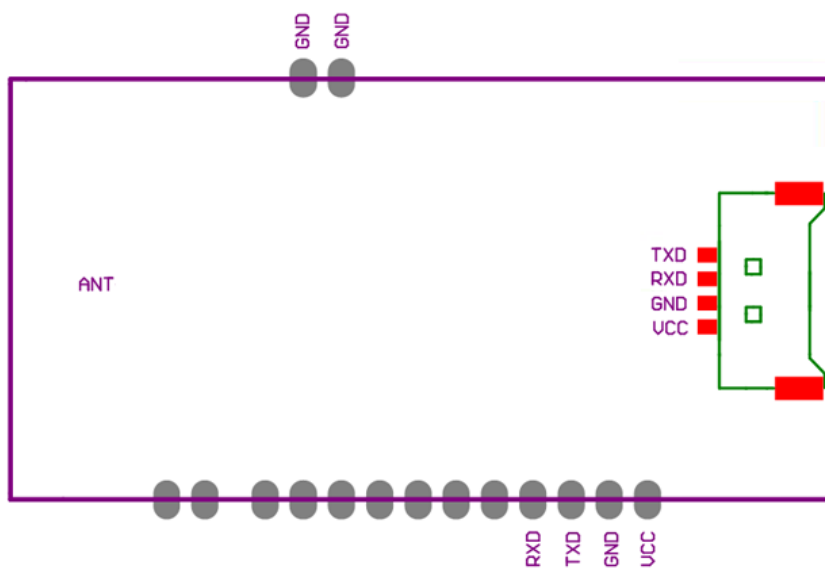
1	General Information.....	3
2	Dimensions.....	3
3	Pinout.....	3
4	Technical Data.....	4
5	Revision History	5

1 General Information

2 Dimensions



3 Pinout



4 Technical Data

Electrical Specifications	
Power Supply	+3.6...5.5Vdc
Power Consumption	Sleep mode: < 300 µA Idle mode: < 10 mA Peak @ +20dBm CW: 160 mA
Operating Frequency	840...960 MHz, selectable frequency bands for operation in EU (ETSI) and USA (FCC)
Antenna	External
RF TX Power	+12.5...+20 dBm, configurable in steps of 1.5 dBm
Reader IC	MagicRF
Interfaces	TTL, 115200 bps, 8 data bits, 1 stop bit, no parity, no flow control
Connector	Molex PanelMate Series, 53780 PCB connector, 51146 cable connector

Mechanical Specifications	
Dimensions	42,5 × 22.1 × 3.3 mm (without UF.L antenna connector)
Weight	3 g
Material	FR4

Environmental Conditions	
Operating Temperature	-25 °C ... +80 °C
Storage Temperature	-40 °C ... +85 °C
Humidity	up to 95 %, non condensing
MTBF	200'000 h

Supported Standards / Tags	
ISO 18000-63/EPC C1G2	Standard ISO 18000-6C (EPC Class 1 Generation 2) E.g.: Alien Higgs 2/3/4, Impinj Monza, NXP UCODE, etc.

Applicable Standards	
EMC	EN 301 489-3
Radio Regulation	EN 302 208-2
Safety & Health	EN 50581:2012 (valid till 2024-07-07) EN 62368-1:2017-07 EN 62479:2011-09
RoHS 2	EC Guideline 2011/65/EU and amendment 2015/863
REACH	EU Guideline 1907/2006, updated by 2018/2005/EU
Certificates	

SDK Information	
Supported OS	Windows XP, Vista, 7, 8, 8.1, 10
Supported Languages	Binary command protocol
Demo Software	Windows

Other functions and details to be continued and upgraded.

5 Revision History

Date	Version	Description
2022-07-21	0.1	First Draft